

Head Band - A3 Printable

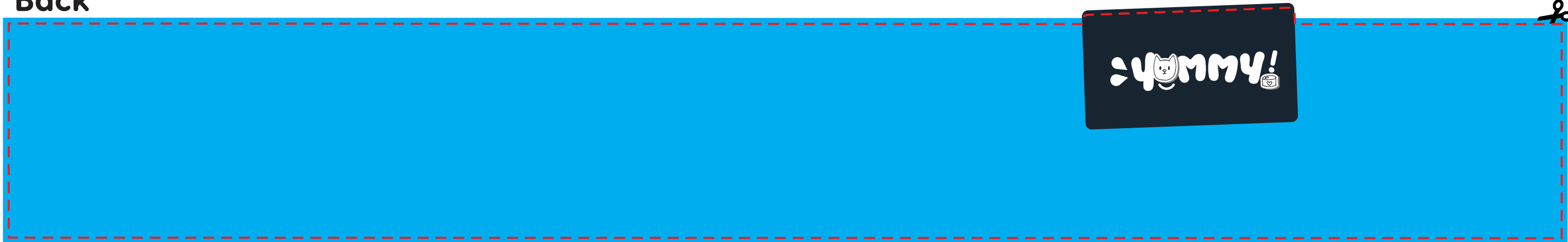
Instructions

1. Print: Use A3 size (250gsm card or thicker for durability)
2. Cut : Carefully cut out the front & back pieces along the dashed lines.
3. Assemble: Attach the side pieces to the front piece using glue or tape.
4. Fit: Adjust to your head, trim any extra length, and secure it with glue or tape.

Front



Back

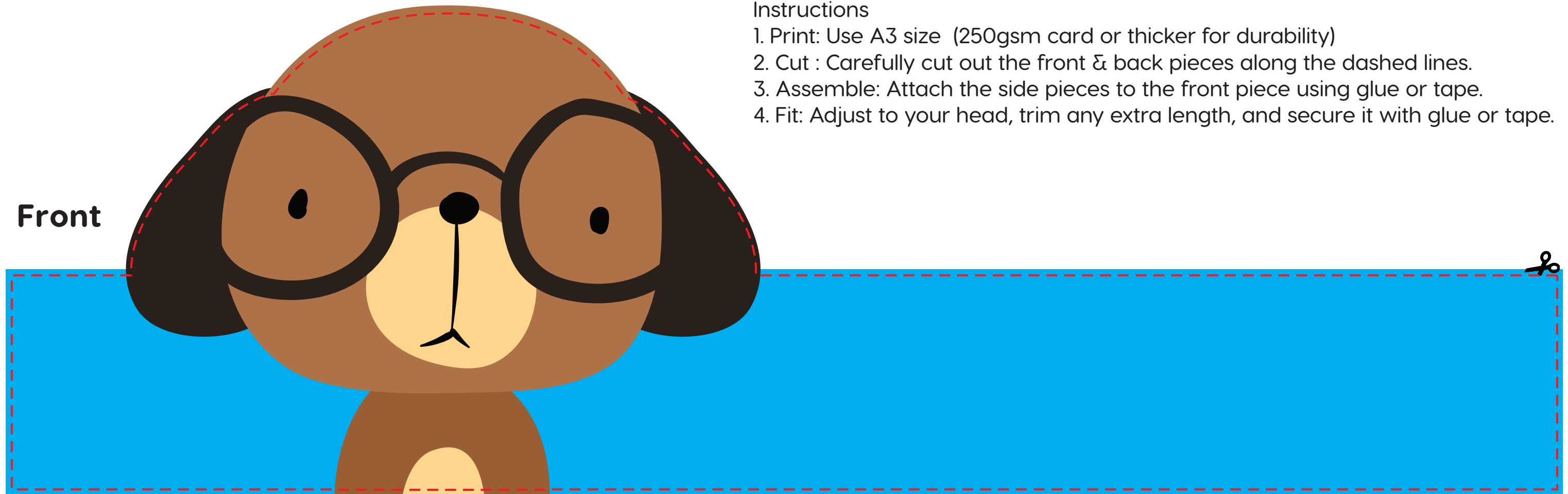


Head Band - A3 Printable

Instructions

1. Print: Use A3 size (250gsm card or thicker for durability)
2. Cut : Carefully cut out the front & back pieces along the dashed lines.
3. Assemble: Attach the side pieces to the front piece using glue or tape.
4. Fit: Adjust to your head, trim any extra length, and secure it with glue or tape.

Front



Back

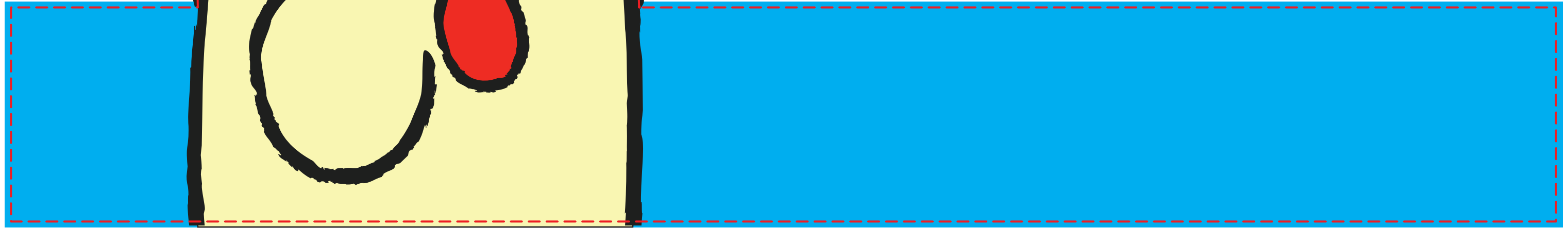


Head Band - A3 Printable

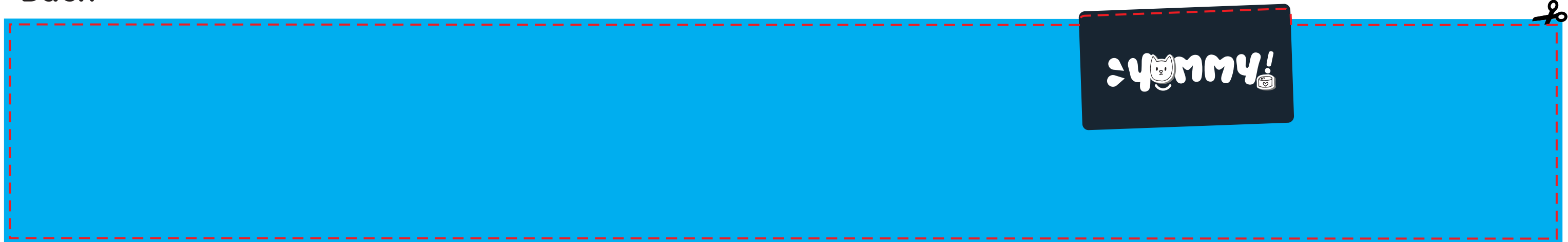
Instructions

1. Print: Use A3 size (250gsm card or thicker for durability)
2. Cut : Carefully cut out the front & back pieces along the dashed lines.
3. Assemble: Attach the side pieces to the front piece using glue or tape.
4. Fit: Adjust to your head, trim any extra length, and secure it with glue or tape.

Front



Back

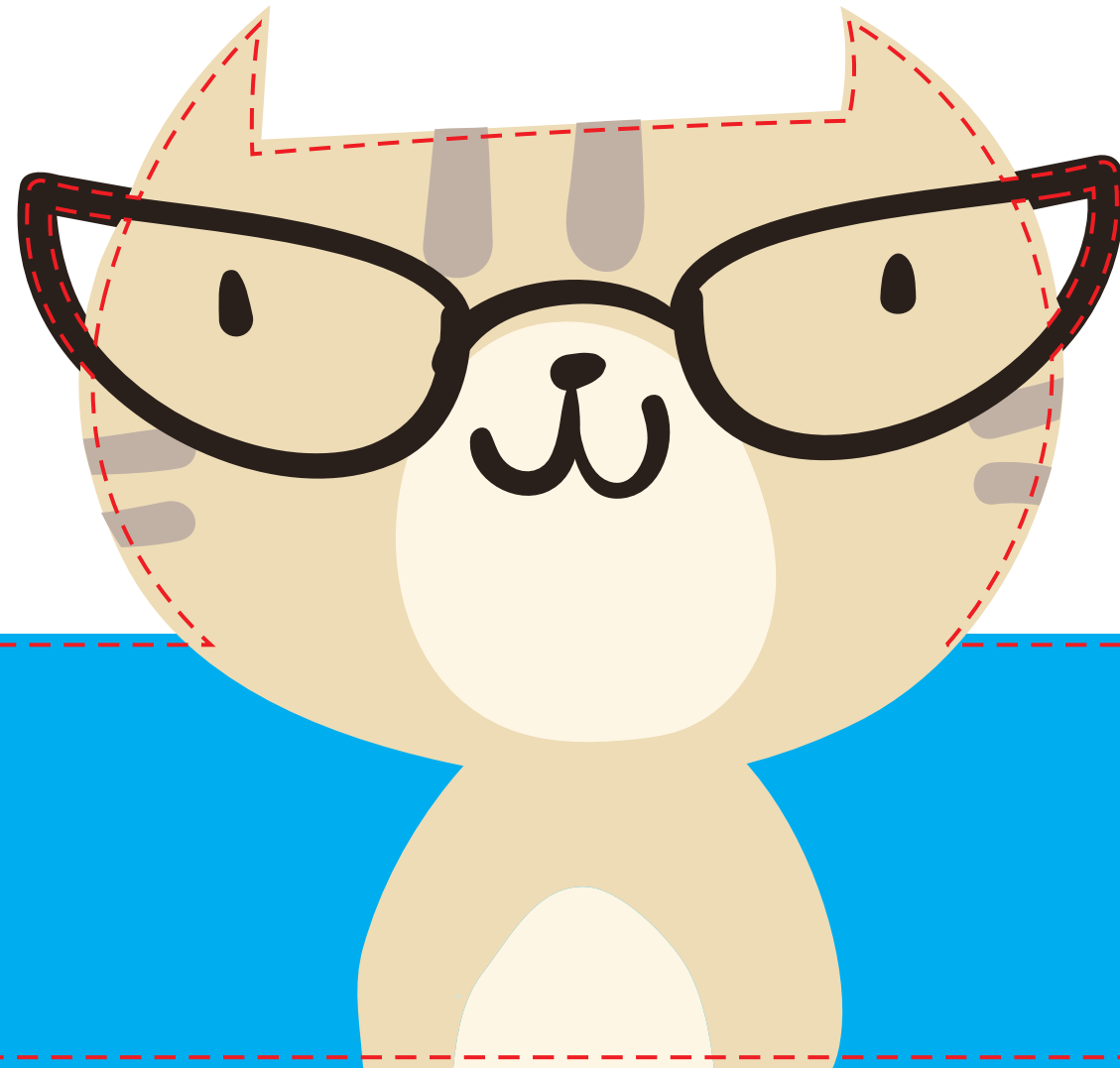


Head Band - A3 Printable

Instructions

1. Print: Use A3 size (250gsm card or thicker for durability)
2. Cut : Carefully cut out the front & back pieces along the dashed lines.
3. Assemble: Attach the side pieces to the front piece using glue or tape.
4. Fit: Adjust to your head, trim any extra length, and secure it with glue or tape.

Front



Back

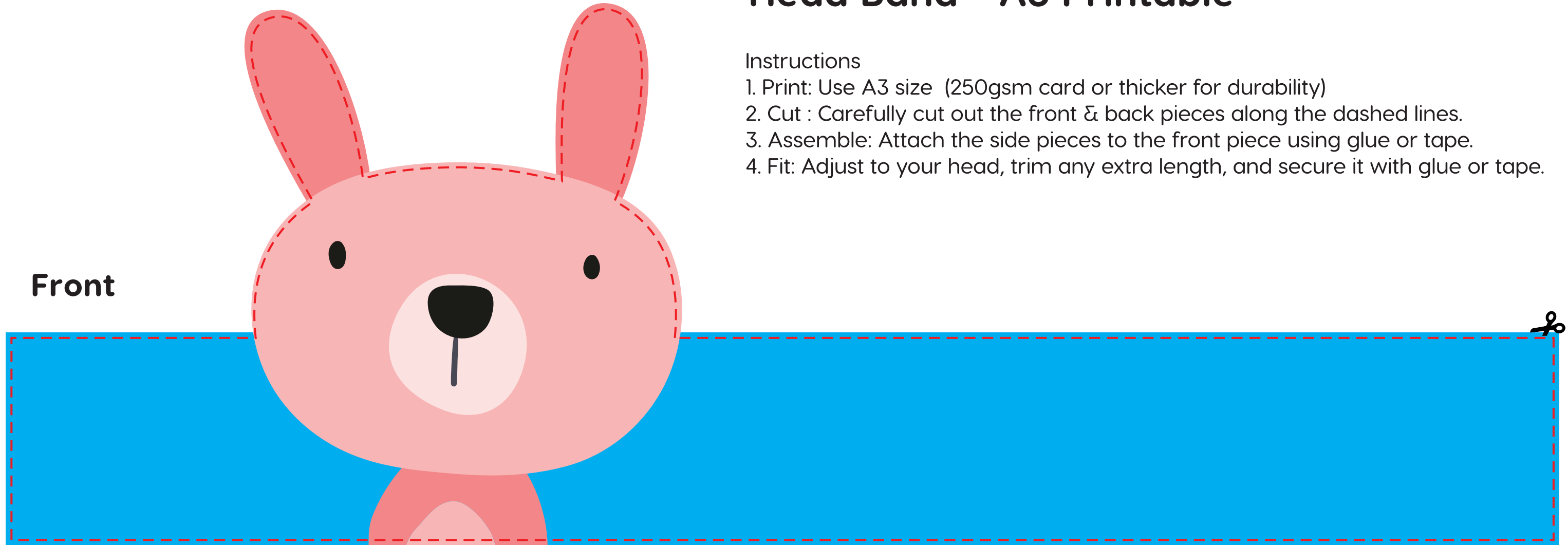


Head Band - A3 Printable

Instructions

1. Print: Use A3 size (250gsm card or thicker for durability)
2. Cut : Carefully cut out the front & back pieces along the dashed lines.
3. Assemble: Attach the side pieces to the front piece using glue or tape.
4. Fit: Adjust to your head, trim any extra length, and secure it with glue or tape.

Front



Back

